



Clover Tool Manufacturing Ltd.

Progressive Dies-Metal Stampings-Sub Assemblies-Tool Design-Projection Welding-Robotic Mig-Welding

Commitment to Quality

Loyalty to our Customers and Employees

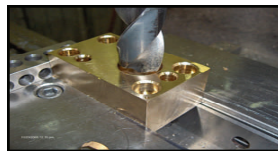
Oppportunity to grow with our Partners

Viable Solutions to the industries Challenges

Enthusiasm for our work

Reliability in all our undertakings

Incorporated in 1979 Clover Tool Manufacturing Ltd. Is an automotive parts manufacturer of metal stampings, and , some of the shipped components are a variety of sub assemblies. We are Canadian based and owned privately held company.



Clover Tool MFG. established its roots as a tool & die shop.



Sensored Bowl system to check for possible defects

PRODUCTION STATISTICS

Clover Tool Processes on average more than 100 tons of steel a day producing 1.50 million parts per week.

QUALITY

Clover Tool Mfg. Ltd. Is a QS9000 ISO 9002 and TSI6949 registered company

PRODUCT PROFILE

A sample of our products includes;

- Window Regulators
- Hand Brake Assemblies
- Door Hinges
- Engine Mountings
- Auto Closures

-Engine Components

-Hood Hinges

-Bracket Reinforcements

-Seat Tracks

-Door Locks

-Wave Plate

-Office Furniture



**Seat Track
GMT 800**

ORGANIZATION STRUCTURE

Clover Tool has established, self directed work teams with hands on management. These seasoned teams all have years of automotive experience. Our management and senior management are all experienced business persons who have been in the industry for years and have developed the skills and knowledge to deal with all situations.

8271 Keele Street
Concord Ontario
Building # 3
L4K 1Z1

Phone: 905-669-1999
Fax: 905-669-3565
E-mail: sales@clovertoolmfg.com



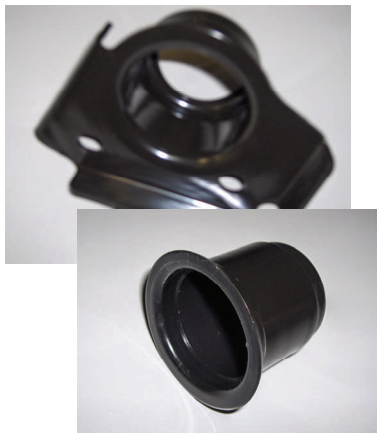
Clover Tool Manufacturing Ltd.

Program Management

The major strength of the company is providing low cost, high quality, manufacturing solutions.

CAD systems used are primarily Key-creator and Mastercam. Additionally we have the capability through diverse suppliers, to use Auto Cad, Solid Works, Catia and Fast Blank.

For the exchange of information we have the capability to use EDI and have a fully functional FTP site.



BUSINESS HISTORY

Clover Tool Manufacturing Ltd. Has grown steadily since its inception in 1979, first as a tool and die shop and more recently as a manufacturer of finished and semi finished components.

The original operation, housed in a 180 square meter shop in Concord, was strictly a tool and die business. By 1989, Clover Tool had more than doubled its space and employed 30 people.

In 1993, a stamping operation was added, and subsequently Clover Tool became a supplier of finished and semi-finished components. With the new partnership of tooling and stamping Clover flourished and expanded its operations another 2 times.

Today Clover Tool operates in over a 130,000 square foot facility providing a full service solution to its customers. From prototyping , tooling, R&D work, stamping, assembling welding, to finished product we have a dedicated staff committed to our customers requirements and wishes.

Quality Policy

CLOVER TOOL'S POLICY IS TO MAINTAIN OUR CUTOMERS' CONFIDENCE AS A HIGHLY CAPABLE SUPPLIER OF METAL PRODUCTS, WHICH MEET AND OR EXCEED THEIR REQUIREMENTS AT COMPETITIVE PRICES.

